

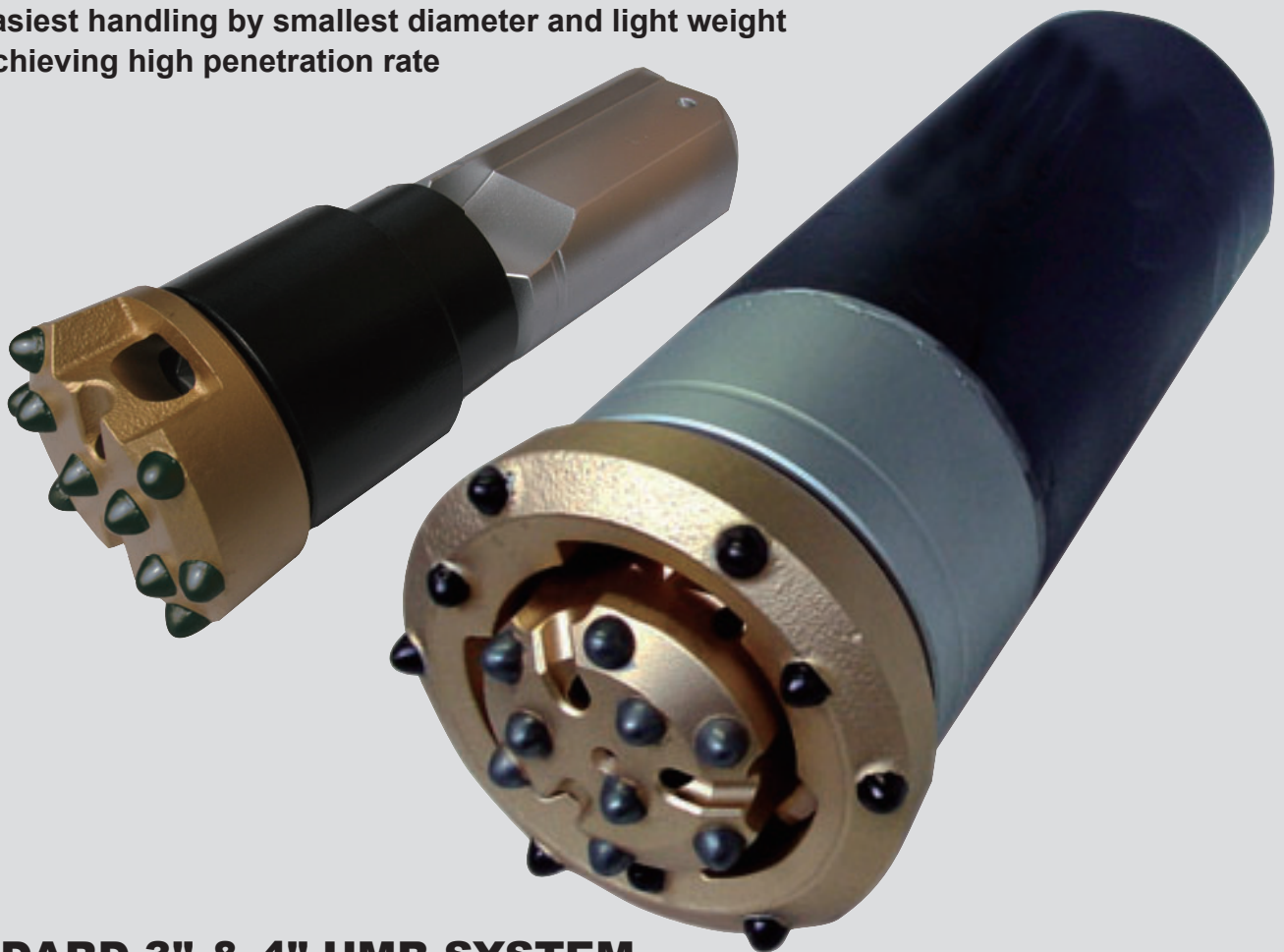
CONCENTRICAL DRILLING SYSTEM

MICRO CASING BIT

Straighter - Deeper Holes with Higher Productivity

STANDARD 2" & 2.5" MCB SYSTEM (For Face bolting)

- Smallest concentrical drilling system
- Applicable for longer holes such as face bolting, geological survey and drainage holes
- 50m horizontal hole drilling has been recorded in Japan as longest drilled hole
- Easiest handling by smallest diameter and light weight
- Achieving high penetration rate



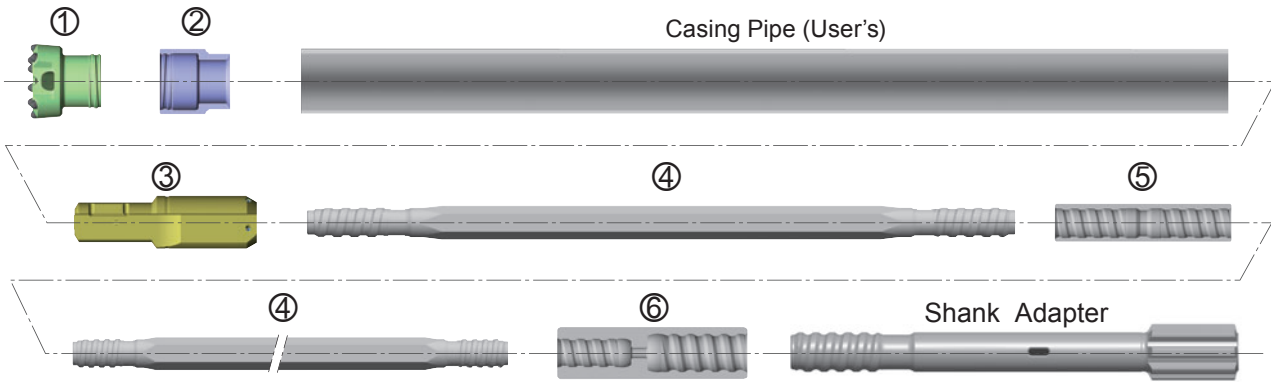
STANDARD 3" & 4" UMB SYSTEM (For Fore piling and Roof bolting)

- Established UMB system for All Ground Fasten method
- Ring bit has a unique connection
- This system has best record at various rock condition in Japan

MMC RYOTEC Corporation

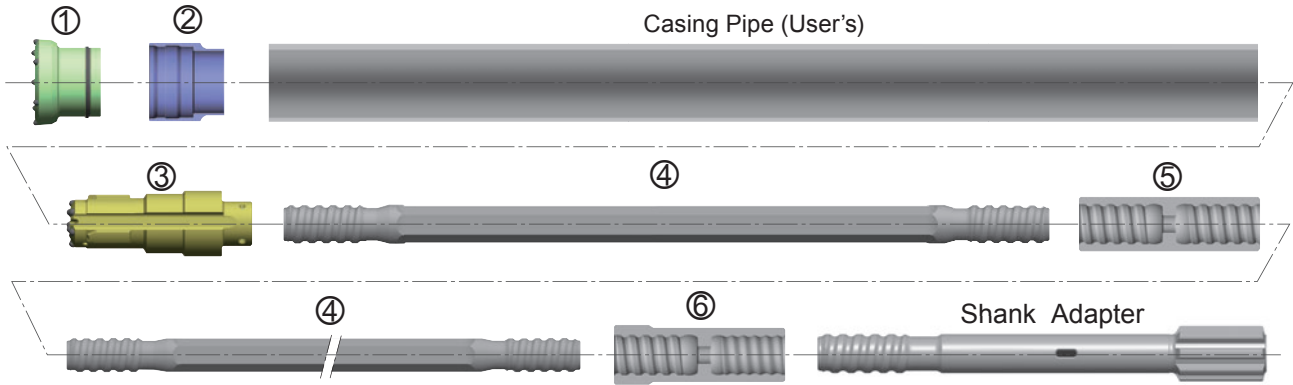
A Group Company of  MITSUBISHI MATERIALS

STANDARD 2" & 2.5" MCB SYSTEM (For Face Bolting)



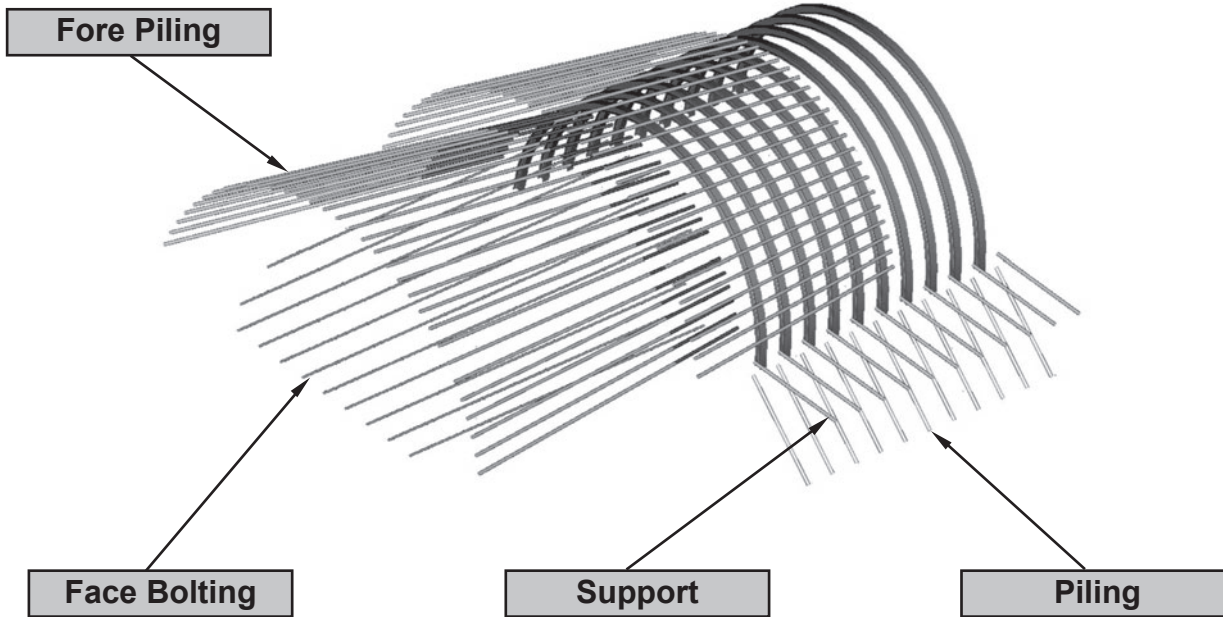
① Single Pass Bit	Casing Pipe		Gauge Dia. (D)		Length (L)		Weight		Part No.		
	Outer Dia.	Wall Max. Thickness	mm	in.	mm	in.	kg	lb			
	60.5 (2.38")	5.5 (0.22")	70	2.76"	86.7	3.41"	1.0	2.2	MC50P70BBC795		
	76.3 (3.00")	5.2 (0.20")	88	3.46"	87.2	3.43"	1.6	3.5	MC65P88BBC705		
② Casing Shoe	Casing Pipe		Outer Dia. (D)		Length (L)		Weight		Part No.		
	Outer Dia.	Wall Max. Thickness	mm	in.	mm	in.	kg	lb			
	60.5 (2.38")	5.5 (0.22")	60.5	2.38"	82	3.23"	0.6	1.3	MC50TOP-796		
	76.3 (3.00")	5.2 (0.20")	76.3	3.00"	82	3.23"	0.9	2.0	MC65TOP-706		
③ Shank Device	Casing Pipe		Guide Dia. (D)		Length (L)		Weight		Part No.		
	Outer Dia.	Wall Max. Thickness	mm	in.	mm	in.	kg	lb			
	60.5 (2.38")	5.5 (0.22")	46.5	1.83"	215	8.46"	1.35	3.0	MC50M28-794 (Spring Pin: Φ6x25)		
	76.3 (3.00")	5.2 (0.20")	62.5	2.46"	215	8.46"	2.6	5.7	MC65M28-704 (Spring Pin: Φ6x32)		
④ Extension Rod	Casing Pipe		Body Section		Length (L)		Weight		Part No.		
	Outer Dia.	Wall Max. Thickness	mm	in.	mm	in.	kg	lb			
		60.5 (2.38")	5.5 (0.22")	Hex.28		3050	10'	14.4		31.7	EH28M28-3050L
		76.3 (3.00")	5.2 (0.20")	Hex.28		3660	12'	17.2		37.8	EH28M28-3660L
			Hex.28		4000	13'31"	18.9	41.6	EH28M28-4000L		
⑤ Coupling Sleeve	Casing Pipe		Outer Dia. (D)		Length (L)		Weight		Part No.		
	Outer Dia.	Wall Max. Thickness	mm	in.	mm	in.	kg	lb			
	60.5 (2.38")	5.5 (0.22")	38	1.50"	160	6.30"	0.7	1.5	CM28AG		
⑥ Crossover Coupling	Casing Pipe		Outer Dia. (D)		Length (L)		Weight		Part No.		
	Outer Dia.	Wall Max. Thickness	mm	in.	mm	in.	kg	lb			
		60.5 (2.38")	5.5 (0.22")	54	2.13"	173	6.81"	2.2		4.8	CM38M28AG
		76.3 (3.00")	5.2 (0.20")	54	2.13"	180	7.09"	2.1		4.6	CR38M28AG
			60	2.36"	189	7.44"	2.8	6.2	CM45M28AG		
Rod Wrench	Casing Pipe		Body Section		Length (L)		Weight		Part No.		
	Outer Dia.	Wall Max. Thickness	mm	in.	mm	in.	kg	lb			
	60.5 (2.38")	5.5 (0.22")	Hex.28		430	16.93"	3.8	8.4	RW-H28		

STANDARD 3" & 4" UMB SYSTEM (For Fore piling and Roof bolting)



① Ring Bit	Casing Pipe		Gauge Dia. (D)		Length (L)		Weight		Part No.	
	Outer Dia.	Wall Max. Thickness	mm	in.	mm	in.	kg	lb		
	89.1 (3.51")	5.5 (0.22")	100	3.94"	82.2	3.24"	1.6	3.5	UL100BB56C680	
	114.3 (4.50")	8.0 (0.31")	126	4.96"	92.0	3.62"	2.7	5.9	UL125BB76C348	
② Casing Shoe	Casing Pipe		Outer Dia. (D)		Length (L)		Weight		Part No.	
	Outer Dia.	Wall Max. Thickness	mm	in.	mm	in.	kg	lb		
	89.1 (3.51")	5.5 (0.22")	89.1	3.51"	86	3.39"	0.9	2.0	UTOP66-678	
	114.3 (4.50")	8.0 (0.31")	114.3	4.50"	100	3.94"	1.5	3.3	UTOP87-551	
③ Pilot Bit	Casing Pipe		Guide Dia. (D)		Length (L)		Weight		Part No.	
	Outer Dia.	Wall Max. Thickness	mm	in.	mm	in.	kg	lb		
	89.1 (3.51")	5.5 (0.22")	76	2.99"	224.8	8.85"	3.5	7.7	UD38MP53BB-689 (Spring Pin: Φ8x45)	
	114.3 (4.50")	8.0 (0.31")	96	3.78"	246	9.69"	7.5	16.5	UD38MP70BB-548 (Spring Pin: Φ8x45)	
④ Extension Rod	Casing Pipe		Body Section		Length (L)		Weight		Part No.	
	Outer Dia.	Wall Max. Thickness	mm	in.	mm	in.	kg	lb		
			Hex.32	3050	10'	17.7	38.9	EH32M38-3050		
			Hex.32	3660	12'	21.4	47.1	EH32M38-3660		
		Hex.32	4000	13'31"	23.5	51.7	EH32M38-4000			
⑤ Coupling Sleeve	Casing Pipe		Outer Dia. (D)		Length (L)		Weight		Part No.	
	Outer Dia.	Wall Max. Thickness	mm	in.	mm	in.	kg	lb		
			54	2.13"	190	7.48"	1.9	4.2	CM38AGF	
⑥ Crossover Coupling	Casing Pipe		Outer Dia. (D)		Length (L)		Weight		Part No.	
	Outer Dia.	Wall Max. Thickness	mm	in.	mm	in.	kg	lb		
			60	2.36"	195	7.68"	2.2	4.8		CR38M38AG
		66	2.60"	215	8.46"	3.1	6.8	CM45M38AG		
Rod Wrench	Casing Pipe		Body Section		Length (L)		Weight		Part No.	
	Outer Dia.	Wall Max. Thickness	mm	in.	mm	in.	kg	lb		
			Hex.32	430	16.93"	5.2	11.4	RW-H32		

APPLICATIONS



● MCB system can be applied for Drainage and Exploration



MMC RYOTEC Corporation

A Group Company of  MITSUBISHI MATERIALS

JAPAN / ROCK TOOLS
MMC RYOTEC CORPORATION
TOKYO OFFICE [Overseas Operations Center]
 KFC Bldg. 7F, 1-6-1 Yokoami, Sumida-ku, Tokyo 130-0015
 TEL +81-3-5819-8723
 E-Mail: rocktool@mmc.co.jp

<http://www.ryotec.co.jp/en/>



Subsidiaries of MITSUBISHI MATERIALS CORPORATION

U.S.A.	MITSUBISHI MATERIALS U.S.A. CORPORATION 105 Corporate Center Dr. Suite A, Mooresville, NC 28117, U.S.A TEL +1-980-312-3150 FAX +1-704-746-9595 E-Mail: mmusct@mmus.com	Australia	MITSUBISHI MATERIALS TRADING CORPORATION PERTH BRANCH Suite 10, 137 Kewdale Road, Kewdale, WA 6105, Australia TEL +61-8-6258-7200 FAX +61-8-6258-5614 E-Mail: ml-sales@mmtc.co.jp Website: https://www.mmtc.co.jp/au/
Germany	MMC HARTMETALL GMBH Comeniusstr. 2, 40670 Meerbusch, Germany TEL +49-2159-9189-32 FAX +49-2159-9189-30079 E-Mail: rocktools@mmchg.de	South Korea	MITSUBISHI MATERIALS TRADING CORPORATION SEOUL BRANCH #1812 Samsung Cheil Bldg., 309, Teheran-ro, Gangnam-gu, Seoul 06151, South Korea TEL +82-2-3474-2331 FAX +82-2-527-2834 Email: mb-rocktool@mmtc.co.jp Website: https://www.mmtc.co.jp/en/
Brazil	MMC METAL DO BRASIL LTDA. Rua Cincinato Braga, 340 13º andar, Bela Vista- CEP 01333-010 São Paulo-SP., BRASIL TEL +55-11-3262-5095 FAX +55-11-3285-4906 E-Mail: mubr@mubr.com.br	Singapore	MITSUBISHI MATERIALS TRADING CORPORATION SINGAPORE BRANCH 10 Anson Road, #32-09 International Plaza, Singapore 079903 TEL +65-6221-7233 FAX +65-6325-4220 Email: mb-rocktool@mmtc.co.jp Website: https://www.mmtc.co.jp/en/
Mexico	MMC METAL DE MEXICO S.A. DE C.V. Av. La Canada No.16 Parque Industrial Bernardo Quintana El marques, Queretaro. TEL +52-442-221-6136 +52-442-221-6137 FAX +52-442-221-6134 E-Mail: gonzalez@mmcmex.com	China	MITSUBISHI MATERIALS (SHANGHAI) CORPORATION 2101 Tower 1, Raffles City, 1133 Changning Road Changning District, Shanghai, 200051, China TEL :+86-(0)21-6235-0745 FAX :+86-(0)21-6235-0741 Inquiry form : http://www.mmc.sh.cn/contact-us/