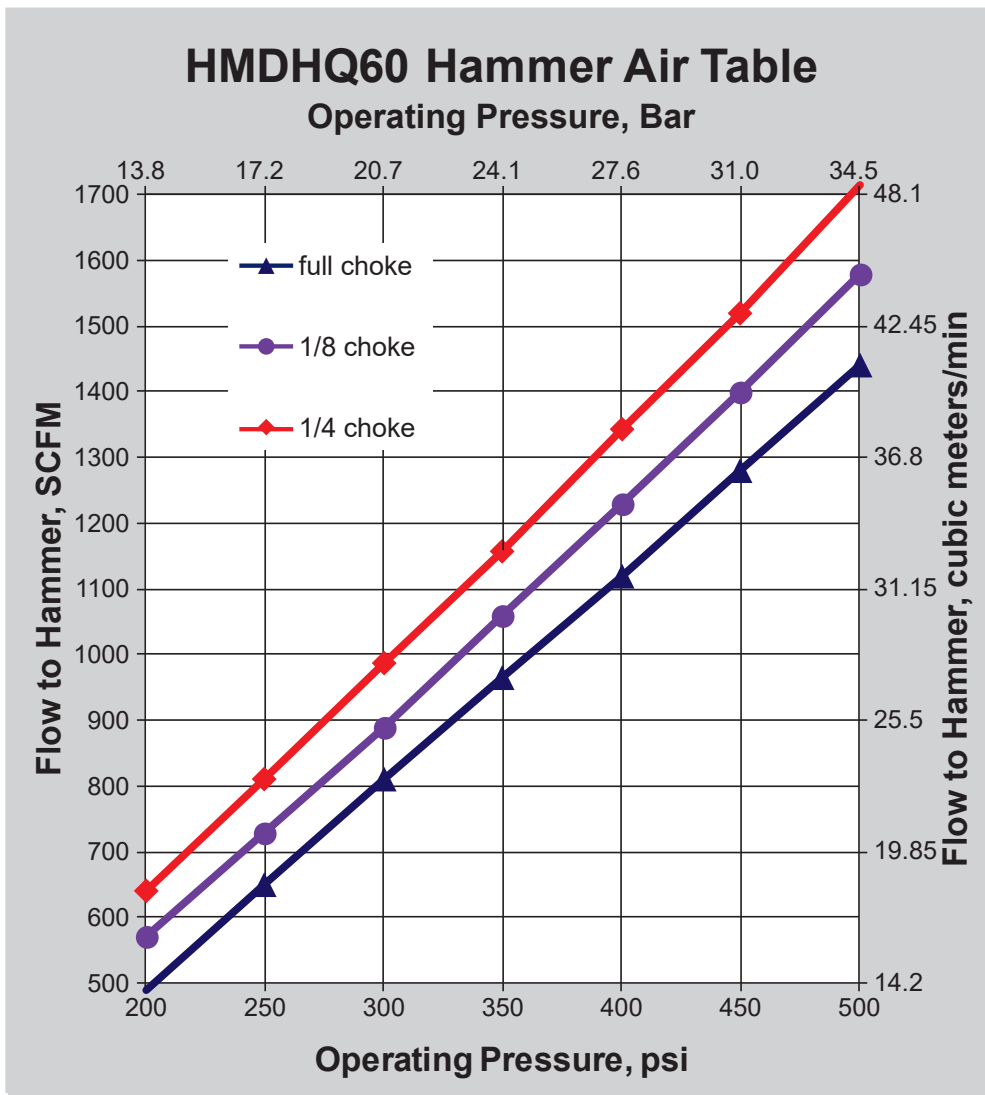


6" QL6 MD HAMMER - HMDHQ60 & HMDHQ60H

HMDHQ60 & HMDHQ60H:

This High Performance Hammer was designed with production drilling in mind. It is designed best for Water Well and Geothermal drilling, but can be used in blast hole drilling applications. The HMDHQ60 & HMDHQ60H's non-ported, air craft quality steel piston is the only moving part in the hammer which limits internal wear and yields maximum penetration rates. Its wearsleeve is reversible and double heat treated for maximum life.



MMC RYOTEC Corporation

A Group Company of  MITSUBISHI MATERIALS

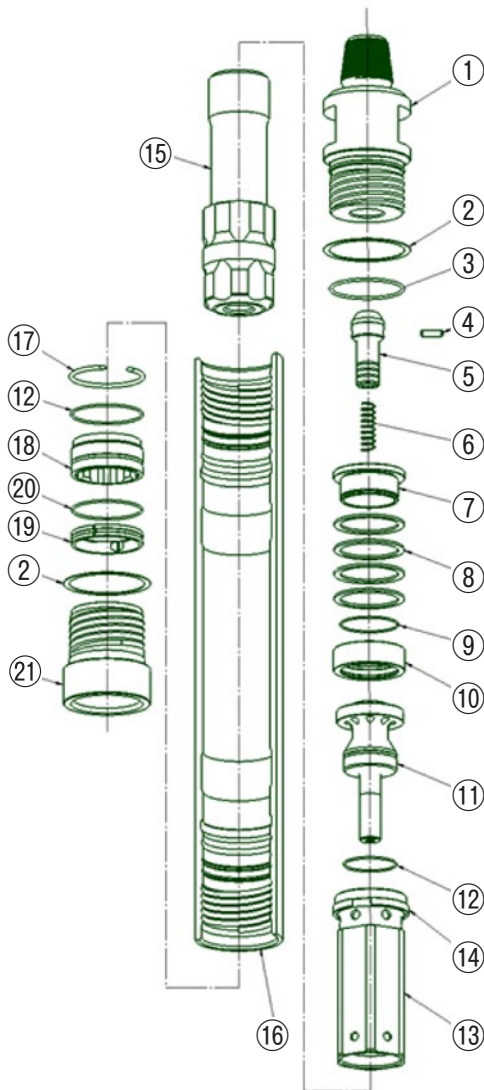
Hammer Specification

	English	Metric
Outside Dia	5.46 in	139 mm
Overall Length Without Bit	48.1 in	1222 mm
Operating Length API shoulder to Bit Face	48.5 in	1232 mm
Total Weight	215 lbs	97.5 kg
Bore Size	4.5 in	114 mm
Piston Weight	43 lbs	19.5 kg
Drillpipe Connect	3-1/2 Reg API Pin Up others available upon request	
Wrench Flats	4 in	101.6 mm
Hole Size Range	6 in to 7 in 152 mm to 178 mm	
Bit Shank Required	QL6	
Minimum Air Volume Required	450 cfm	13 cmm
Operating Pressure	500 psi	34 bar

Parts List

Shown at the right side of the chart is the quantity of spare parts that should be kept on hand. Level 1 is for water well drilling, Level 3 is for high production drilling.

Model HMDHQ60 & HMDHQ60H



ITEM No	PART No	QTY REQD	PART NAME	WEIGHT		SPARE PARTS ON HAND		
				LBS	KGS	LEVEL 1	LEVEL 2	LEVEL 3
1	HP-BKH-MD6Q1-0018	1	Back Head, 3 1/2" API Reg. Pin Up	46.5	21.14	—	—	1
1	HP-BKH-MD6Q1HD-0019	1	H.D. Back Head, 3 1/2" API Reg. Pin-Up	46.5	—	—	—	1
2	HP-BOW-0040	2	Break Out Washer	0.03	—	—	2	4
3	HP-ORG/BKH-0102	1	O-Ring for Backhead	0.01	—	1	2	4
4	HP-CST-0054	1	Choke Set	0.01	—	—	—	—
5	HP-CKV-RH6-0048	1	RH6 Check Valve Assembly	0.58	0.26	—	—	1
6	HP-CVS-0050	1	Spring for Check Valve	0.3	0.14	—	1	2
7	HP-GUR-0084	1	Disc Spring Guide Ring	1.65	0.75	—	—	—
8	HP-DSC-0078	4	Disc Spring	0.25	0.11	—	—	4
9	HP-ORG/GUR-0117	1	O-Ring for Guide Ring	0.01	—	—	1	2
10	HP-SPT-0153	1	Disc Spring Spacer Tube	1.64	0.75	—	—	—
11	HP-ADB-MD61-0007	1	Air Distributor	10.5	4.77	—	—	1
12	HP-ORG/ADB-0096	2	O-Ring for Air Distributor & Bearing	0.01	—	2	4	6
13	HP-CLD-MD61-0074	1	Cylinder Assembly	6.7	3.05	—	1	2
13	HP-CLDB-MD61-0173	1	Cylinder Body	6.7	3.05	—	1	2
14	HP-RRG/CLD-0203	1	Retaining Ring for Cylinder	0.48	0.22	—	—	—
15	HP-PST-MD6Q2-0127	1	Piston	47.3	21.5	—	1	1
16	HP-WSV-MD61-0161	1	Wear Sleeve	83.4	37.91	1	2	3
16	HP-WSV-MD61HD-0162	1	Heavy Duty Wear Sleeve	83.4	37.91	1	2	3
17	HP-RRG/BRG-0135	1	Retaining Ring for Bearing	0.16	0.07	—	—	—
18	HP-BRG-MD6QH-0023	1	Bearing	3.7	1.68	—	1	1
19	HP-BRR-0031	1	Bit Retaining Ring	1.49	0.68	—	1	1
20	HP-ORG/BRR-0108	1	O-Ring for Bit Retaining Ring	0.01	—	1	2	4
21	HP-CHK-MD6Q-0064	1	Chuck	14.7	6.68	2	4	6
21	HP-CHK-MD6QHD-0065	1	Heavy Duty Chuck	14.7	6.68	2	4	6

THE FOLLOWING PARTS ARE SOLD SEPARATE

—	HP-MUW-0181	Make Up Washer	—	—	—	—	—	1
—	HP-RBDKIT-MD61Q-0194	Rebuild Kit	—	—	—	—	—	—
—	HP-RBDKIT-MD61QHD-0216	Heavy Duty Rebuild Kit	—	—	—	—	—	—

MITSUBISHI MATERIALS, USA CORPORATION

California Office
3535 Hyland Avenue, Suite 200
Costa Mesa, CA 92626
Customer Service: 800.423.1358

North Carolina Rock Tools Office
105 Corporate Center Drive
Mooreville, NC 28117
Customer Service: 980.312.3150
Fax: 704.746.9595
E-Mail: mmusclt@mmus.com

Toronto Office
3535 Laird Road
Units 15 & 16
Mississauga, Ontario, Canada L5L 5Y7
Main: 905.814.0240
Fax: 905.814.0245