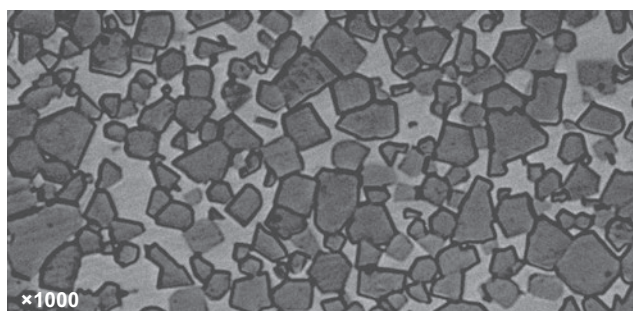


# MITSUBISHI CARBIDE GRADE FOR HOT ROLLING

## 熱間圧延ロール用超硬合金

### GXシリーズ

#### GX Series

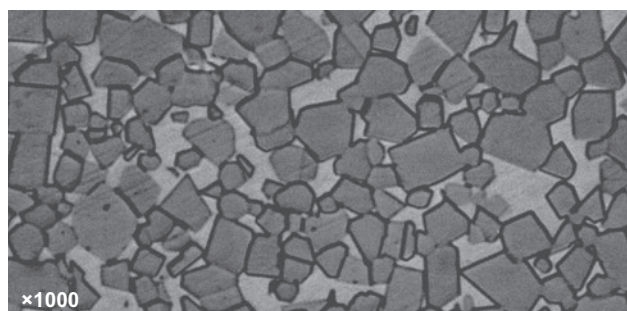


このシリーズは、過激な加熱、冷却の繰り返しに対する耐熱クラック性、耐熱疲労性を保有し、特に高温下での耐酸化性、耐食性に優れており熱間圧延用ロールに最適な材種系列です。

Shows a superior resistance to thermal crack and thermal fatigue under repeated heating and cooling condition, and also an excellent resistance to oxidation and corrosion at high temperatures. This series is most suitable for hot rolling.

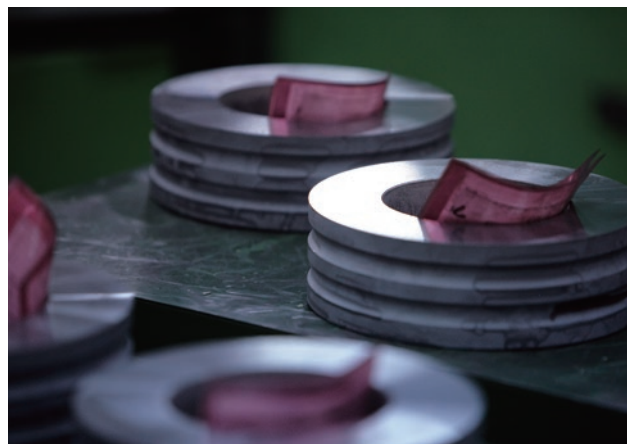
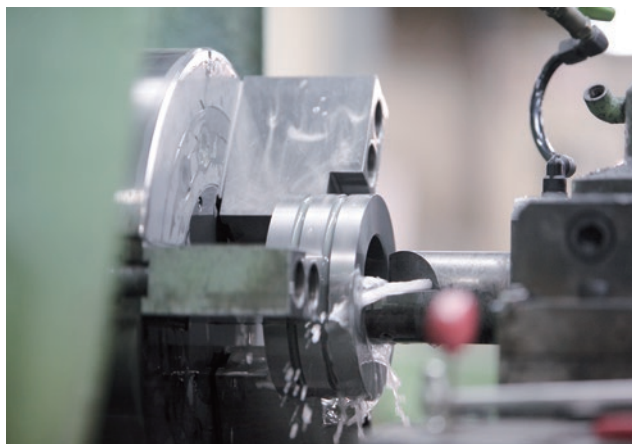
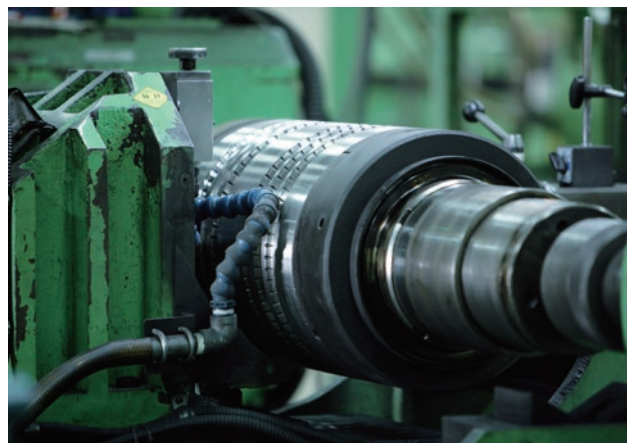
### GTi-Sシリーズ

#### GTi-S Series



このシリーズは、耐衝撃性、耐摩耗性に優れており、クラック発生や割損などに対する抵抗力を保持した材種系列です。

Shows a good crack resistance and wear resistance.



## 材種一覧表

(代表値 : Representative values)

| 材種分類<br>Classification    | 材種名<br>Grade | 材種分類記号<br>Code | 結合相量<br>Binder | 硬さ<br>Hardness | 旧材種名称<br>Old Grade |        |
|---------------------------|--------------|----------------|----------------|----------------|--------------------|--------|
|                           |              |                | wt%            | HRA            |                    |        |
| GXシリーズ<br>GX Series       | GX210        | RU-50          | 8              | 87.5           | GA5210             | —      |
|                           | GX225        | RU-60          | 13             | 85.5           | GA5223             | —      |
|                           | GX230        | RU-70          | 15             | 84.5           | GA5230             | —      |
|                           | GX240        | RU-70          | 19             | 83.0           | GA5240             | —      |
|                           | GX250        | RU-80          | 24             | 81.0           | GA5250             | GA7248 |
|                           | GX265        | RU-80          | 29             | 79.5           | GA5265             | —      |
|                           | GX315        | RU-60          | 11             | 86.0           | GA5315             | —      |
|                           | GX320        | RU-60          | 13             | 85.0           | GA5320             | GA5322 |
|                           | GX330        | RU-70          | 15             | 84.0           | GA5328             | GA7330 |
|                           | GX335        | RU-70          | 18             | 83.0           | GA5335             | GA7335 |
|                           | GX340        | RU-70          | 20             | 82.0           | GA5340             | GA7340 |
|                           | GX345        | RU-80          | 23             | 81.0           | GA5345             | —      |
|                           | GX350        | RU-80          | 25             | 80.0           | GA5350             | GA7348 |
|                           | GX360        | RU-80          | 27             | 79.0           | GA5355             | GA7355 |
|                           | GX365        | RU-80          | 30             | 78.0           | GA7360             | GA7365 |
|                           | GX515        | RU-60          | 9              | 86.5           | GX5515             | —      |
|                           | GX520        | RU-60          | 11             | 85.5           | GA5523             | —      |
|                           | GX530        | RU-70          | 15             | 83.5           | GA5530             | —      |
|                           | GX540        | RU-80          | 20             | 81.5           | GA5540             | —      |
|                           | GX550        | RU-80          | 24             | 79.5           | GA5550             | —      |
| GTi-Sシリーズ<br>GTi-S Series | GTi05S       | VU-50          | 6              | 88.0           | —                  | —      |
|                           | GTi15S       | VU-60          | 10.5           | 86.5           | —                  | —      |
|                           | GTi20S       | VU-60          | 12             | 86.0           | —                  | —      |
|                           | GTi30S       | VU-70          | 16             | 84.5           | —                  | —      |
|                           | GTi40S       | VU-70          | 20             | 83.0           | —                  | —      |
|                           | GTi50S       | VU-70          | 22.5           | 82.0           | —                  | —      |
|                           | GTi60S       | VU-80          | 27             | 81.0           | —                  | —      |
|                           | GTi65S       | VU-80          | 30             | 79.5           | —                  | —      |